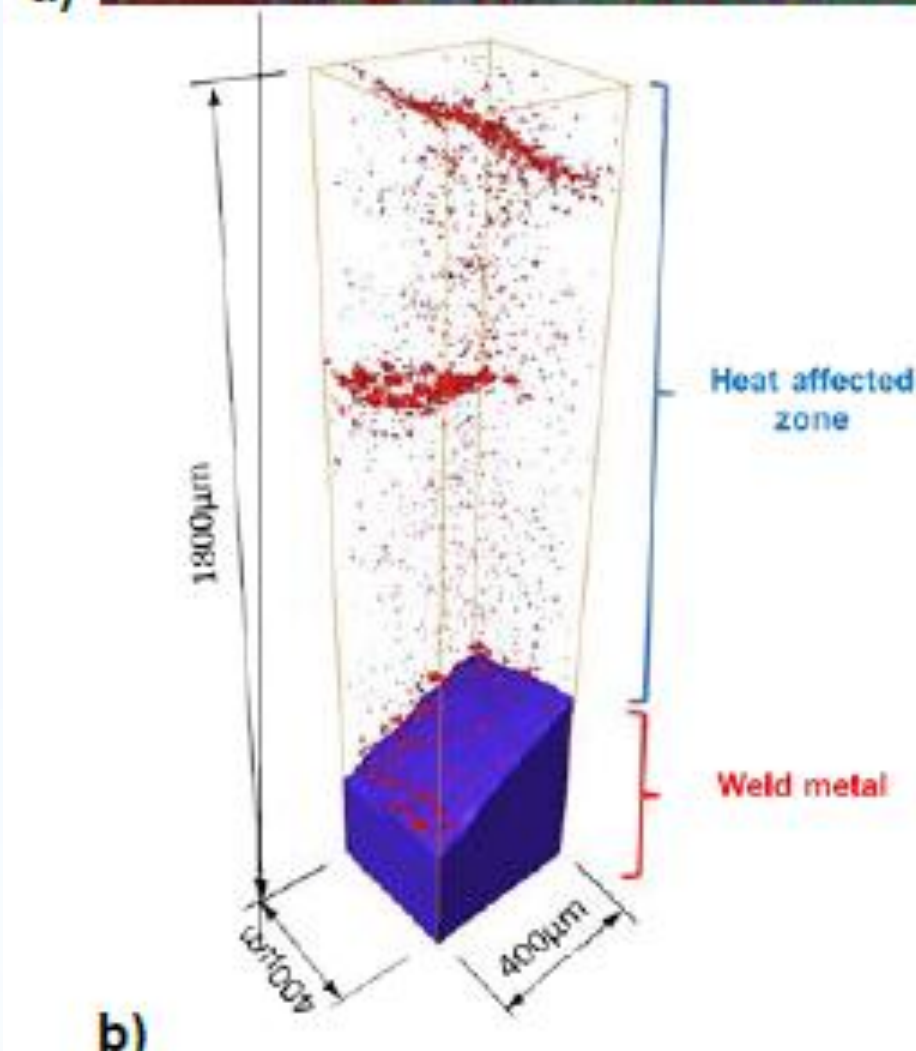
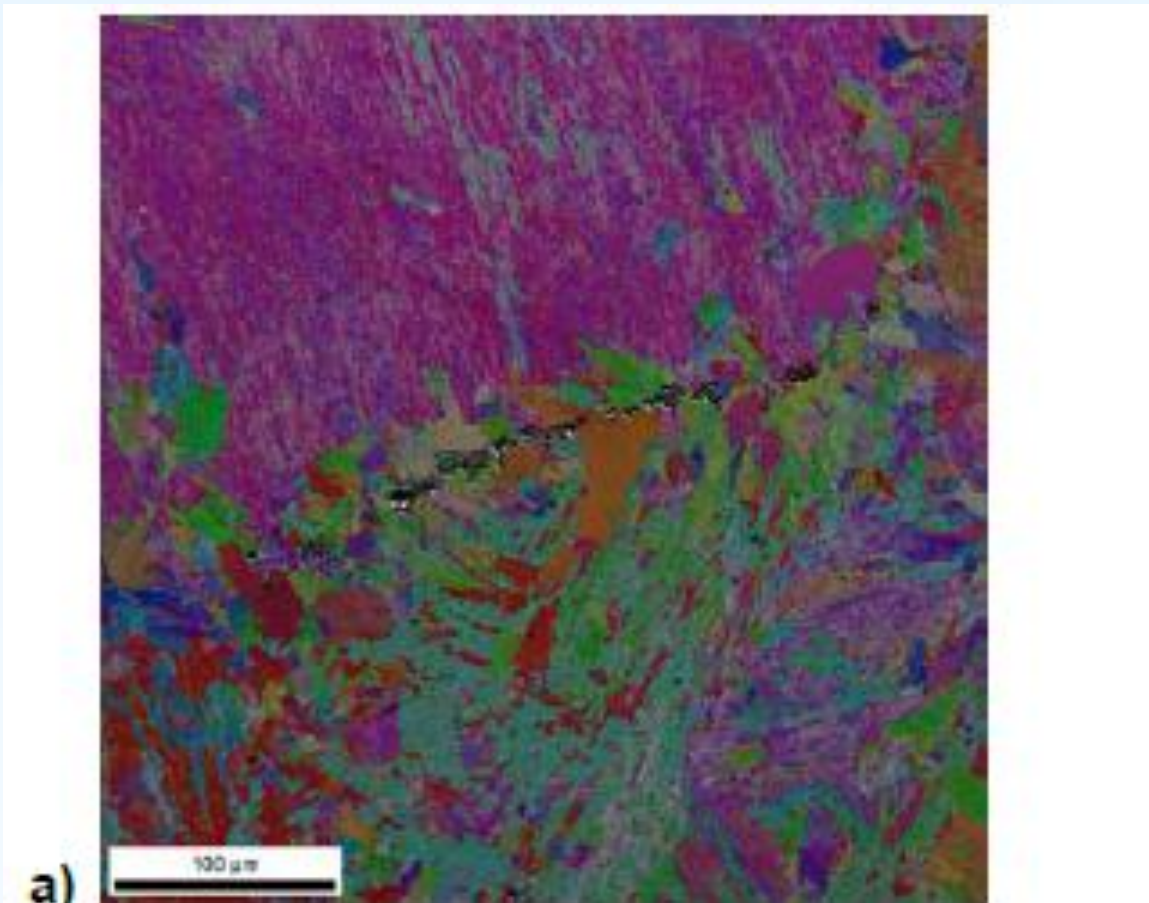


WG2 is composed of ca. 35 research centers / universities and ca. 25 companies, in 15 EU countries.

The thematic scope of WG2 is related to materials for energy design, production and characterization.

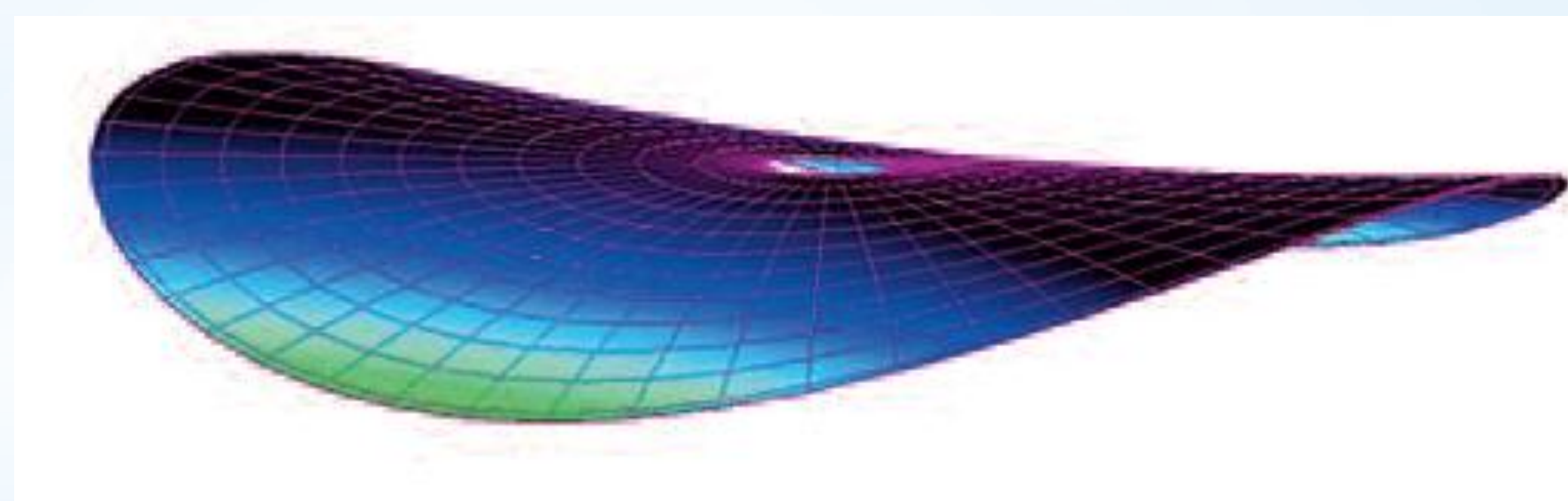
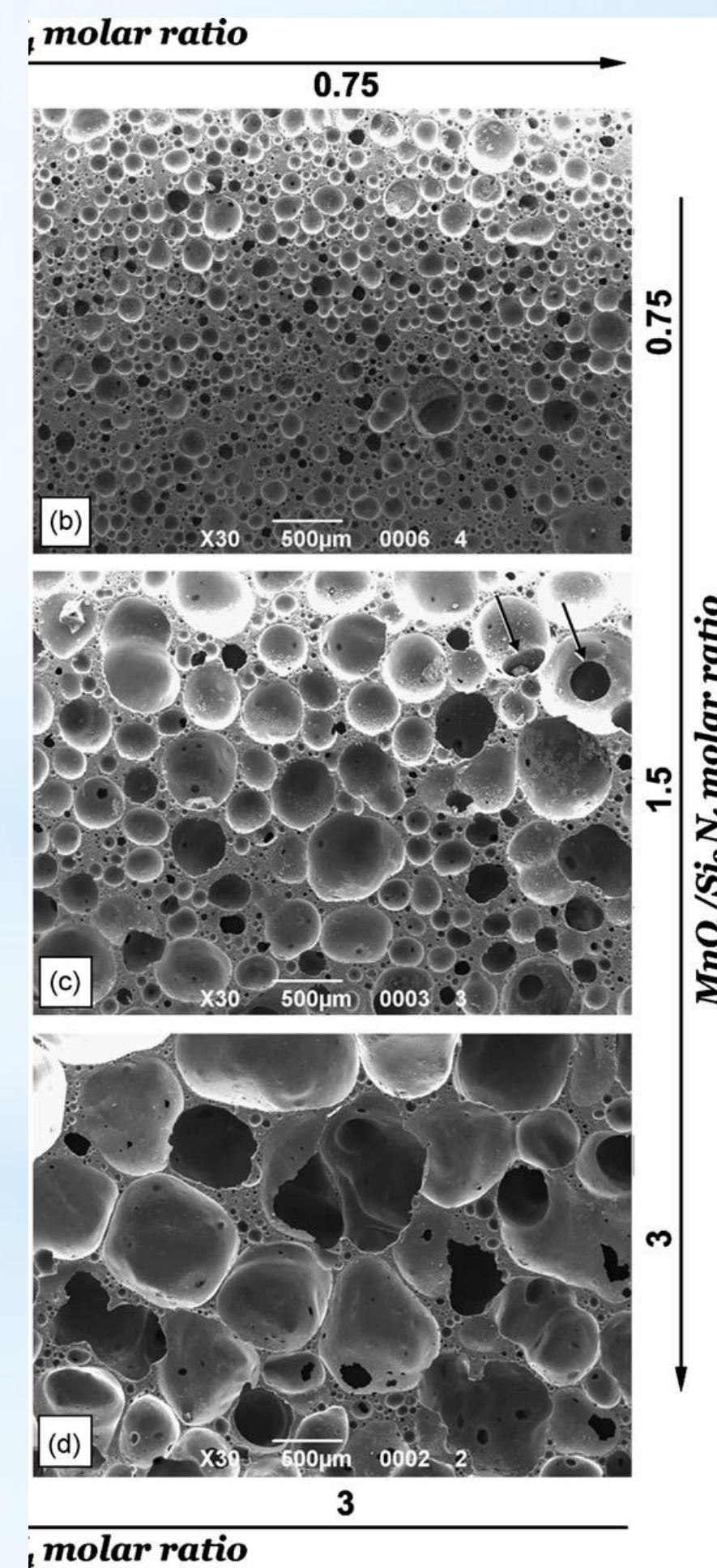
Materials for Energy in WG2 means expertise in ferritic and austenitic steels, Ni-based super-alloys, Ti-based alloys, ceramics, ceramic matrix composites, glasses; materials related issues for energy production from renewable sources, biomass combustion, fuel cells, nuclear energy plants, petro-chemical industry, etc.

The aim of this Working Group is to do joint research activity on Materials for Energy, possibly within funded projects, but also on a bottom-up, free, scientific basis.



Void formation as a precursor of type IV cracking at the prior austenite grain boundaries of MARBN steel 9Cr3W3CoVNbMN: a) Electron backscatter diffraction image of the void formation in the HAZ of a crossweld sample failed after 12900 hours at 80MPa and 650°C; b) 3D synchrotron micro tomography image of the specimen failed after 17200 hours at 70MPa and 650°C (C. Schlacher et al.: Creep and damage investigation of improved 9%Cr steel welded joints, "9th International Conference on Trends in Welding Research, ASM, USA, 4-8 June 2012) (TUG, Graz University of Technology, Austria, member of KMM-VIN WG2)

Morphological evolution of glass foams with MnO<sub>2</sub> amount. (ITC, Spain, member of KMM-VIN WG2)



Simulation and Validation of Thermo-mechanical Stresses in Planar SOFCs  
The simulations explain the "saddle-like" deformations of cells often observed at room temperature. (EMPA, Switzerland, member of KMM-VIN WG2)

Looking for scientific cooperation, problem solving, partners ?

[Home](#) | [About KMM-VIN](#) | [Partners](#) | [Mission](#) | [Research](#) | [Services](#) | [Education](#) | [Newsletter](#) | [Collaboration](#) | [Projects](#) | [Latest News](#) | [Press Release](#) | [Links](#) | [Contact](#)

**Sub Menus**  
[Home](#)  
[About KMM-VIN](#)  
[Partners](#)  
[Mission](#)  
[Research](#)  
[Services](#)  
[Education](#)  
[Newsletter](#)  
[Collaboration](#)  
[Projects](#)  
[Latest News](#)  
[Press release](#)  
[Links](#)  
[Contact](#)

**Ask KMM-VIN**  
 Please fill the form below:  
 Title, First Name, Name \*  
 Affiliation: \*  
 E-mail: \*  
 Enquiry Details: \*  
 Accept Terms & Conditions \* - Select -  
 KMM-VIN website Terms&Conditions

KMM-VIN

Copyright 2008-2012 KMM-VIN AISBL | KMM-VIN AISBL website Terms&Conditions

Contact us at: <http://www.kmm-vin.eu/node/142>